

Guidelines for Notches in Rim Board

During construction, situations may arise that require notching a rim board or rim joist. This technical bulletin provides guidelines for placement of notches in the following products used as rim board: TJ® Rim Board, TimberStrand® LSL, TimberStrand® LSL rim board, and TJI® joists.

Figure 1 below details the allowable placement of notches for rectangular rim board and TJI® rim joists that are continuously supported by wall below.

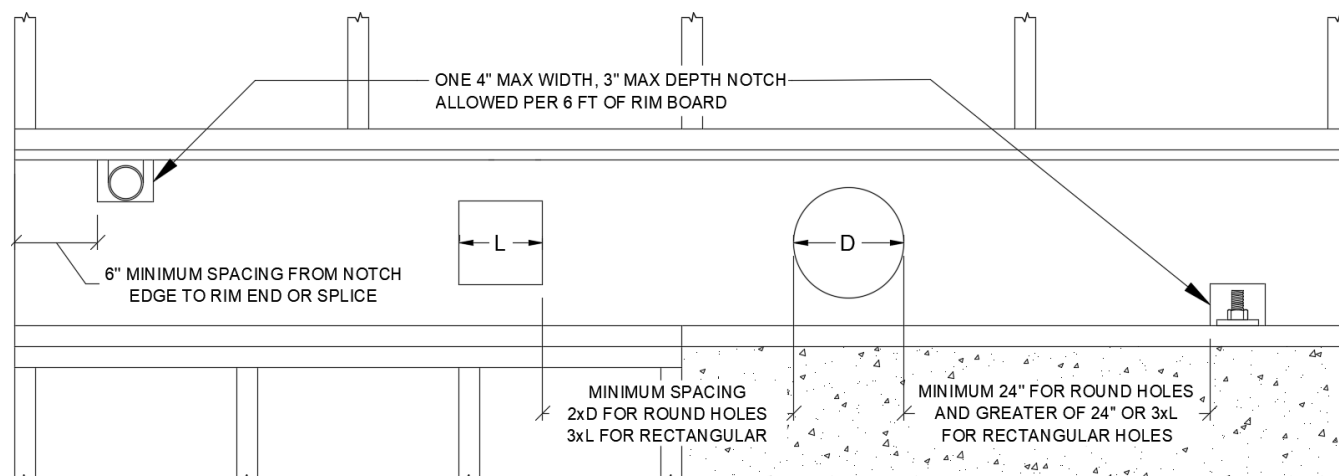


Figure 1: Allowable notches and holes for rectangular rim boards and TJI® rim joists

General Notes:

- TJI® rim joists are limited to 16" deep.
- Notches shall be located so that the horizontal distance to the nearest edge of the notch is at least:
 - 6" from the end (or splice) of the rim.
 - 24" from the edge of a round hole.
 - The greater of 24" or three times the hole length from the edge of a rectangular hole.
- Permissible hole sizes:
 - Round hole with diameter not exceeding 2/3 rim board depth, centered vertically.
 - Rectangular or square hole with largest dimension not exceeding 2/3 rim board depth, centered vertically.
 - Holes less than the maximum allotted depth may be placed anywhere vertically within the center 2/3 of the member depth.
- The horizontal distance between the edges of adjacent round holes must be at least twice the diameter of the largest adjacent round hole, and three times the greatest dimension of the largest adjacent rectangular hole.
- The horizontal distance between the end of the rim board and the edge of the hole must be at least twice the diameter for a round hole and three times the hole length for a rectangular hole.
- Do not locate holes, notches, or cuts under concentrated loads.
- Applicable with International Residential Code (IRC) prescriptive lateral design only. For vertical loading information, see [ESR-1387](#) and [ESR-1153](#). Contact a design professional for all other situations.
- For a continuously supported rim board or rim joist, vertical cuts, full or partial, up to 3½" wide are permitted (typically for utilities) provided member continuity for lateral load transfer is not required by the designer of record.

If you have any questions, please contact your Weyerhaeuser representative.