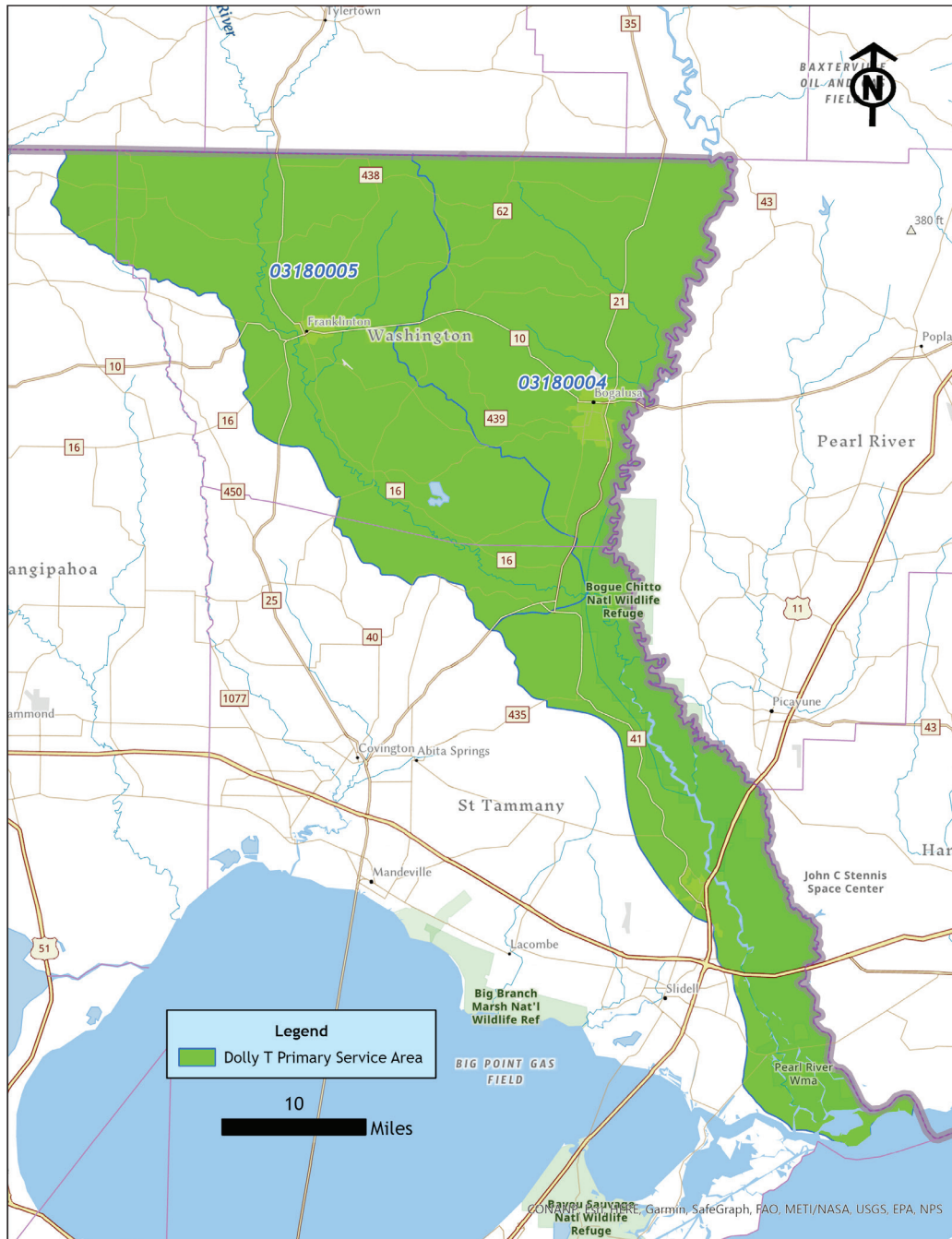


# Bank: DOLLY T - *Pine Savannah*



**Location:** St. Tammany Parish, LA

**Acreeage:** +/- 1,473 acres

**Purpose:** Restoring 1,159 acres of intensively managed pine; enhancing 215 acres of existing bayhead swamp wetlands, 69 acres of cypress/hardwood flat wetlands and 30 acres of uplands

### Primary HUC:

**03180004** (Lower Pearl)

**03180005** (Bogue Chitto)

### Sales and Marketing Contact:

**Andrew J. Harrison, Jr.**

Wetlands Mitigation Strategies, LLC

ajh@wetlandsmitigationstrategies.com

225.907.3380

