

Stellar[®] Software Operations Reporting

Note: Only batches that have been selected in Stellar software and have had the Produce button pressed will be included in this reporting. Make sure Stellar batches are produced daily so this reporting accurately reflects what has happened in your operations.

Toggle between report pages depending on the specific information you're looking to review.

- [Production Dashboard](#)
 - Overview of Stellar[®] batches produced and aggregate production statistics.
- [Batch Detail](#)
 - Daily work order and batch counts, and detailed inventory usage.
- [Inventory Utilization](#)
 - Inventory lengths used in production.
- [Waste Detail](#)
 - Waste creation per batch cut patterns.
- [Drops Detail](#)
 - Comparison of created versus used drop lengths.
- [Job Shipping Detail](#)
 - Length and quantity of material shipped.
- [Length History](#)
 - Shipped materials aggregated by length and quantity.
- [ERP Reman Report](#)
 - Data for use with your point-of-sales program.

Stellar[®] Reporting

Production Dashboard

This shows your ratio between drops created in produced batches and drops pulled from the yard.

Anything over 1 means you are creating more drops than you are using.

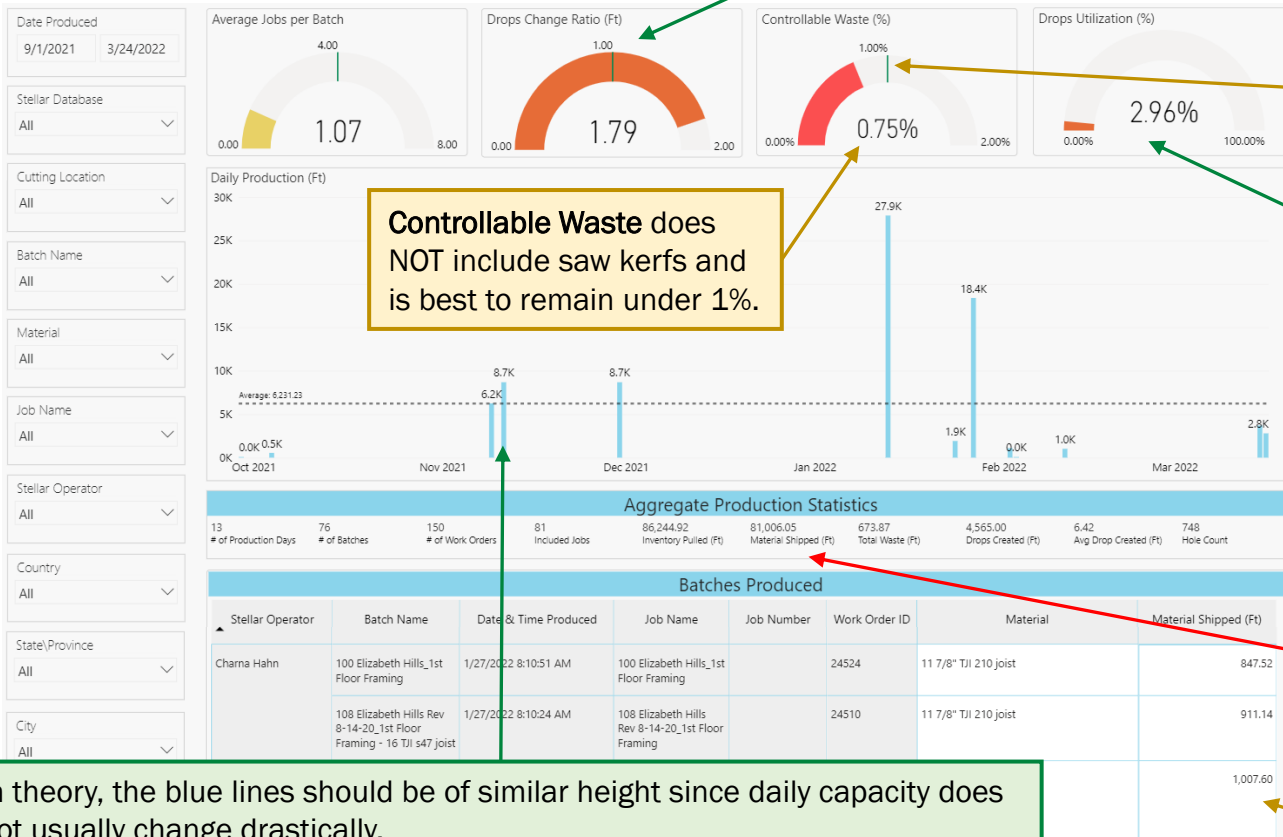
The green line in each visual represents the "sweet" spot.

This represents the percentage of inventory footage used in batches that was originally a drop from a previous batch.

Controllable Waste does NOT include saw kerfs and is best to remain under 1%.

Material Shipped should be similar to Output Footage on Equipment reports but only if batches are produced in Stellar daily.

Compare batch TLF to individual job TLF – note that same Work Order ID may appear on multiple jobs.



In theory, the blue lines should be of similar height since daily capacity does not usually change drastically.

Extreme spikes could be due to a delay in producing batches in Stellar software compared to when they actually ran through the saw – you’ll often see these spikes immediately after a gap on the graph.

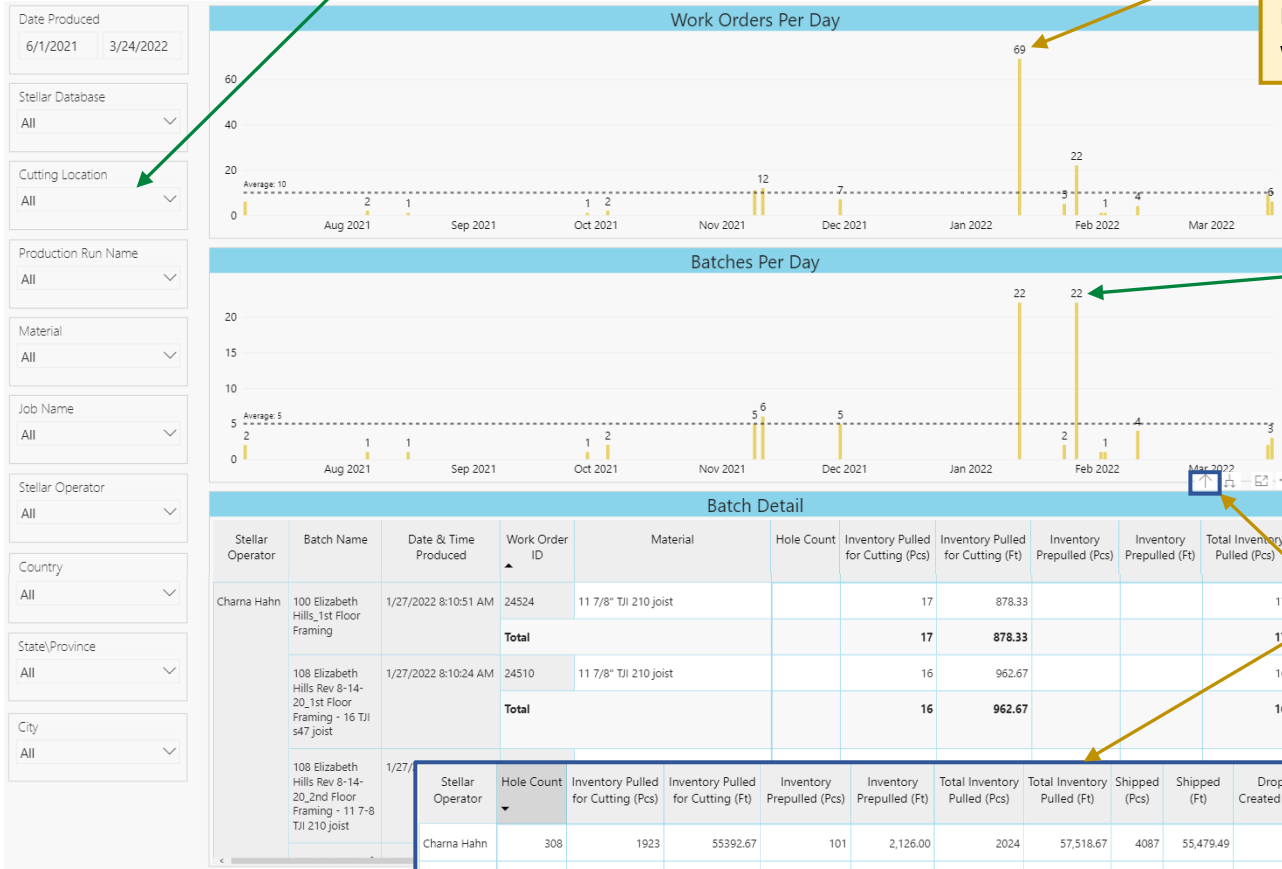
Low numbers could be due to a lack of demand or inability to meet capacity.

Stellar® Reporting (cont'd)

Batch Detail

Filtering by *Cutting Location* allows you to view saw line, yard, and jobsite batches and work orders separately.

Represents the number of *Work Orders* produced on a given day – note that this number may be higher than total batches due to multiple product types existing within a single batch.



Represents the number of *Batches* produced on a given day.

Use the *Drill-Up* button to compare totals from multiple Stellar operators using consolidated batches and materials.

Stellar Operator	Hole Count	Inventory Pulled for Cutting (Pcs)	Inventory Pulled for Cutting (Ft)	Inventory Prepulled (Pcs)	Inventory Prepulled (Ft)	Total Inventory Pulled (Pcs)	Total Inventory Pulled (Ft)	Shipped (Pcs)	Shipped (Ft)	Drops Created (Pcs)	Drops Created (Ft)	Avg Drop Created (Ft)	Controllable Waste (%)	Controllable Waste (FT)	Total Waste (%)	Total Waste (FT)
Charna Hahn	308	1923	55392.67	101	2,126.00	2024	57,518.67	4087	55,479.49	489	1,485.00	3.04	0.96%	551.00	0.96%	554.18
Erika Boyer		2	120.25			2	120.25	10	120.00				0.21%	0.25	0.21%	0.25
James Johnson	0	492	16298.38	12	192.00	504	16,490.38	659	15,689.75	105	744.00	7.09	0.32%	53.26	0.34%	56.62
Tina Condon	633	821	29620.04	146	2,670.00	967	32,290.04	1597	28,994.56	228	3,104.00	13.61	0.50%	160.58	0.59%	191.48

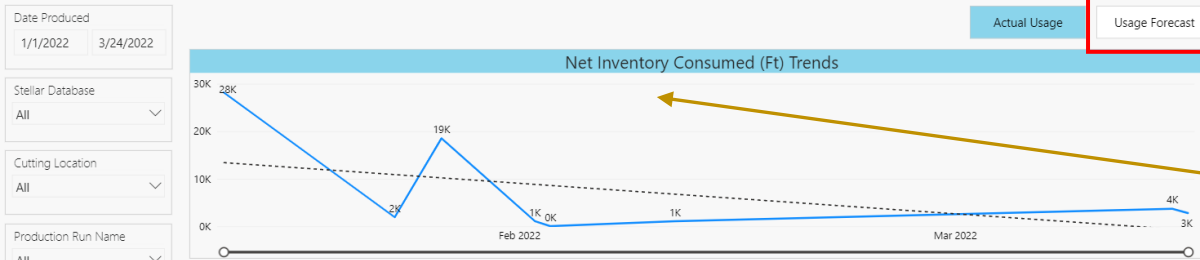
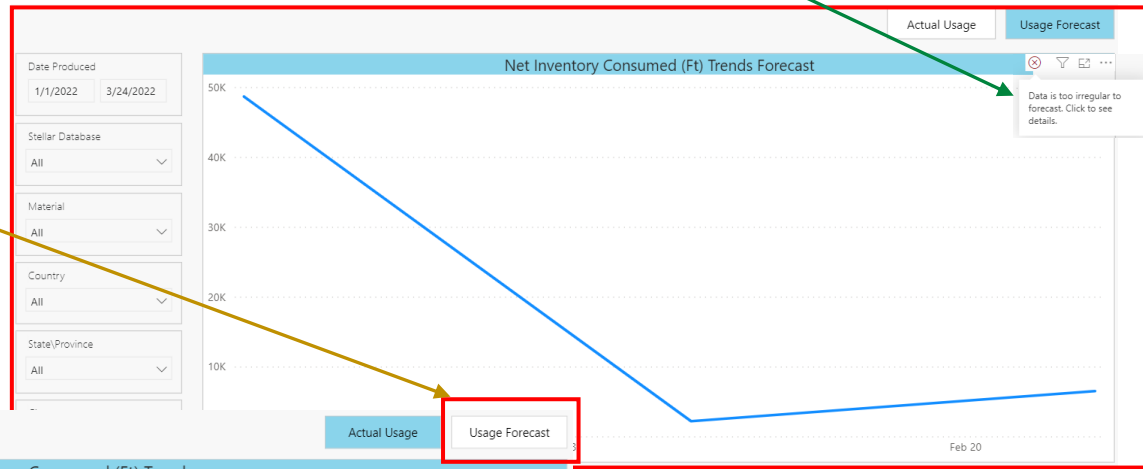
Stellar[®] Reporting (cont'd)

Erratic data may lead to the inability to create a forecast.

Inventory Utilization

Usage Forecast is based on historical data – the more history you have, the more accurate it will be to help determine replenishment quantities.

When in Forecast mode, select the *Actual Usage* button to return to standard view and/or choose another report.



Total footage of material consumed includes shipped pieces, waste, and drop truncation.

Inventory Length Trend

Inventory Location: All

Inventory Used for Production					
Material	Inventory Length (Ft)	Inventory Location	2022	Total	
1 1/8" x 11 7/8" TJ Rim Board	12.00	Infeed	Quantity	290	290
			Footage Used (Ft)	3,480.00	3,480.00
1 1/8" x 14" TJ Rim Board	12.00	Infeed	Quantity	39	39
			Footage Used (Ft)	468.00	468.00
1 1/8" x 16" TJ Rim Board	16.00	Infeed	Quantity	8	8
			Footage Used (Ft)	128.00	128.00
1 3/4" x 11 7/8" 1.55E TimberStrand LSL	12.00	Infeed	Quantity	21	21
			Footage Used (Ft)	252.00	252.00

Use the Inventory Location filter to view lengths introduced to the saw by only Infeed or only Drops locations.

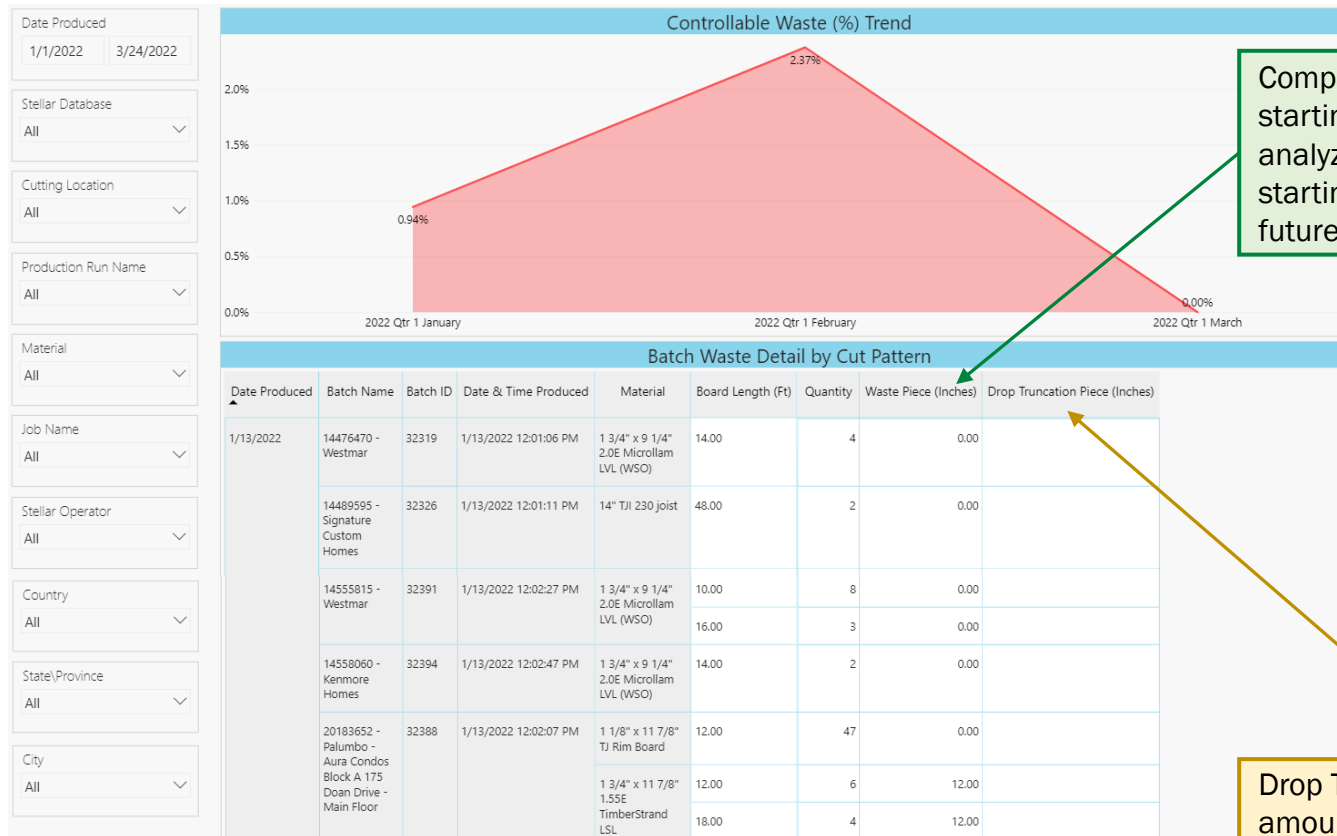
Graphical trend views are available for selection only when a specific material length is selected.

These totals reflect starting lengths pulled from inventory for production. Keep in mind that some material may be returned to inventory as Drops after batches are produced.

Total quantities for Infeed location should be higher than that of Drops.

Stellar[®] Reporting (cont'd)

Waste Detail



Compare length of waste to starting board length – use this to analyze whether a smaller starting length would be better for future batches.

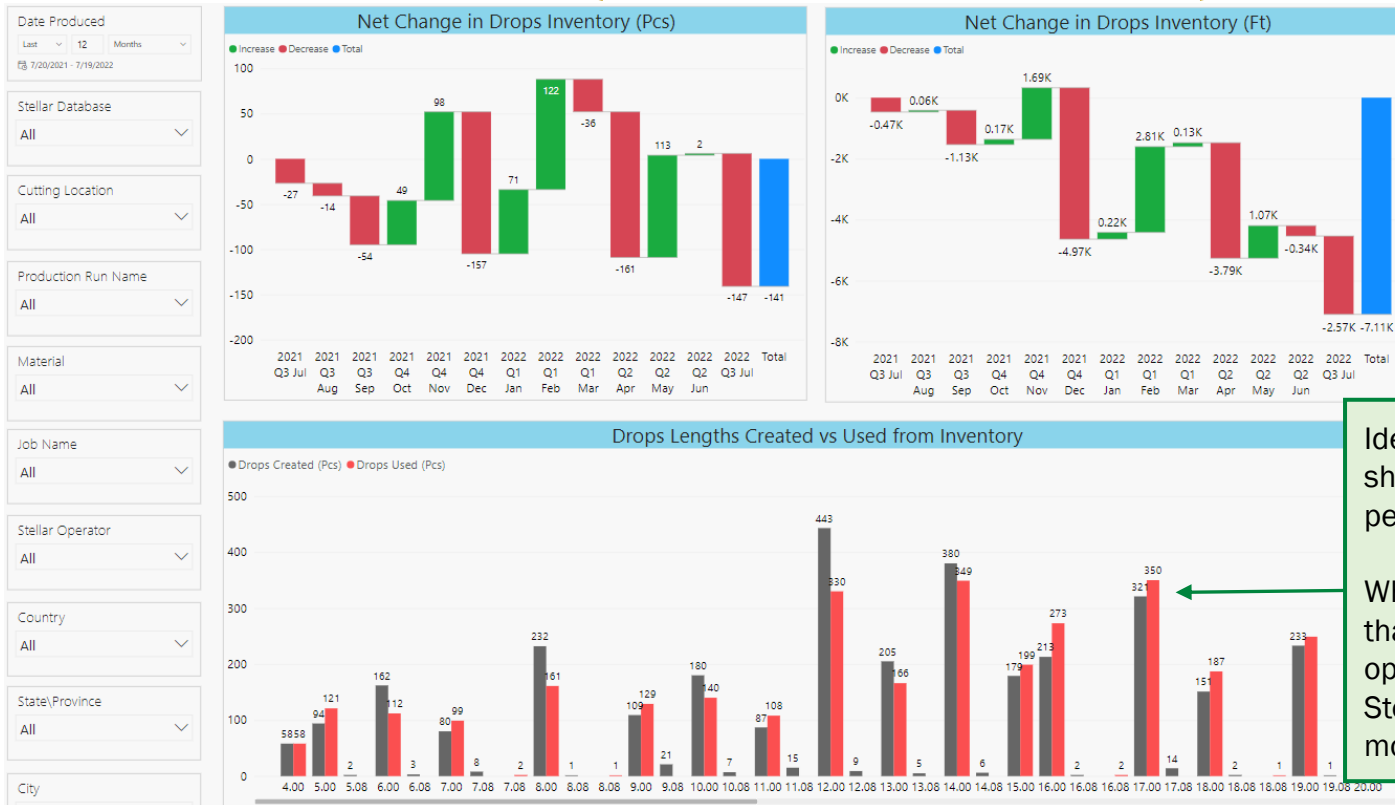
Drop Truncation Piece is the amount of length discarded by rounding down (ie: a 12-'6" Drop board becomes 12' in your Drop inventory with 6" of truncation).

Stellar[®] Reporting (cont'd)

Drops Detail

This waterfall graph shows increases (green) and decreases (red) of drop quantities in inventory per displayed time period; the blue bar represents the total change in drops within the specified date range.

The graph for Footage is generally a better indicator of trends than Pieces.



Ideally, red and grey bars should be of similar height per length and date range.

When red bars are higher than grey ones, it is an opportunity for the Stellar[®] operator to create more optimal drop lengths.

Stellar[®] Reporting (cont'd)

Job Shipping Detail

Increase the range of included dates if you cannot find a specific job.

Compare material/length/quantity of pieces cut from longer lengths versus prepulls.

Job Shipping Lists										
Date Produced	Job Name	Job Number	Material	Date & Time Produced	Batch Name	Shipped Length (Ft)	Quantity	Production Type		
1/1/2022 - 3/24/2022	100 Elizabeth Hills_1st Floor Framing		11 7/8" TJI 210 joist	1/27/2022 8:10:51 AM	100 Elizabeth Hills_1st Floor Framing	29.00	3	job		
30.00						5	job			
31.00						2	job			
	1007460521_PO5370401		16" TJI 210 joist	1/24/2022 3:29:52 PM	1007460521_PO5370401	18.00	2	job		
20.00						5	job			
34.00						2	job			
36.00						4	job			
42.00						9	job			
	1007605426_PO5370435		16" TJI 360 joist	1/24/2022 3:29:52 PM	1007605426_PO5370401	22.00	6	job		
42.00						9	job			
14.00						19	job			
22.00						10	job			
	108 Elizabeth Hills Rev 8-14-20_1st Floor Framing		14" TJI 110 joist	1/24/2022 3:32:52 PM	1007605426_PO5370435	32.00	11	job		
14" TJI 210 joist						1/24/2022 3:32:52 PM	1007605426_PO5370435	22.00	10	job
14" TJI 360 joist						1/24/2022 3:32:52 PM	1007605426_PO5370435	22.00	10	job
11 7/8" TJI 210 joist						1/27/2022 8:10:24 AM	108 Elizabeth Hills Rev 8-14-20_1st Floor Framing - 16 TJI s47 joist	0.37	1	job
								0.56	1	job
			0.87	1	job					
			1.25	1	job					
			1.25	11	job					
			1.37	1	job					
			1.43	1	job					

Search for specific jobs using the Job Name filter.

Stellar[®] Reporting (cont'd)

Length History

Use the "Back to report" button to return to standard view.

Date Produced
1/1/2022 3/24/2022

Stellar Database
All

Cutting Location
All

Production Run Name
All

Material
All

Job Name
All

Stellar Operator
All

Country
All

State/Province
All

City
All

Material Shipped Trend

Material Shipped for Jobs Rounded Up to the Nearest Foot

Material	Rounded Piece Length (Ft)	Quantity
1 1/8" x 11 7/8" TJ Rim Board	1.00	2
	2.00	13
	3.00	1
	12.00	290
	16.00	50
Total		356
1 1/8" x 14" TJ Rim Board	12.00	39
	Total	39
1 1/8" x 16" TJ Rim Board	16.00	8
Total		8

Cut Pattern Offcuts

Material	Inventory Location	Board Length (Ft)	Unused Offcut (Ft)	Quantity	
1 1/8" x 11 7/8" TJ Rim Board	Infeed	12.00	0.00	290	
			16.00	0.00	8
		16.00	0.00	1	
			5.95	0.00	1
1 1/8" x 14" TJ Rim Board	Infeed	12.00	0.00	39	
			1.00	12	
1 3/4" x 11 7/8" 1.55E TimberStrand LSL	Drops	28.00	10.00	1	
			12.00	0.00	7
			1.00	12	
			3.00	1	
			5.00	1	
14.00	0.00	0.00	17		
		1.00	5		

The graph shows a blue area representing quantity over time. The x-axis is labeled '2021 Qtr 1 February' and '2021 Qtr 1 March'. The y-axis has markers at 20, 40, and 60. A dashed horizontal line is labeled 'Average line 33'. The quantity starts at approximately 40 in early February and decreases steadily to about 10 by early March.

Select a cell in the Rounded Piece Length or Quantity columns to be able to access the **Material Shipped Trend** button and view a graph of quantities of that specific product length over the specified date range.

This shows the popularity of lengths specified per product type/size – this can be used to determine optimal inventory replenishment lengths and quantities.

This shows which lengths had more offcuts (drops).

Last Updated: Aug-22

Weyerhaeuser

24

Stellar[®] Reporting (cont'd)

ERP Reman Report

Date Produced
1/1/2022 3/24/2022

Stellar Database
All

Cutting Location
All

Production Run Name
All

Stellar Operator
All

Country
All

State/Province
All

City
All

Remove from ERP Inventory

Material	Board Length (Ft)	Quantity	Total Footage
1 1/8" x 11 7/8" TJ Rim Board	12	290	3480
	16	10	160
Total		300	3640
1 1/8" x 14" TJ Rim Board	12	39	468
	Total		39
1 3/4" x 11 7/8" 1.55E TimberStrand LSL	12	21	252
	14	22	308

Caution - Specialized Reporting

This page contains visuals highly specialized for a specific use case. All piece and board lengths shown are rounded up to the nearest whole foot. Please contact Software Support at 800-833-9491, if you need more information about how to use the visuals on this page.

Provides add/remove list per specified date range for comparison and/or editing of ERP inventory.

Piece Types to Include in Add to ERP Inventory

All

Add to ERP Inventory

Material	Rounded Length (Ft)	Piece Type	Quantity	Total Footage
1 1/8" x 11 7/8" TJ Rim Board	1	job	2	2
	2	job	13	26
	3	GroupBlocking	1	3
	12	job	290	3480
	16	GroupBlocking	8	128
1 1/8" x 14" TJ Rim Board	12	39	468	
1 3/4" x 11 7/8"	12	21	252	

Use dropdown to filter piece types, like Job or Drop material, depending on the type of changes you wish to make in your point-of-sales system.

Waste

Material	Total Waste (Ft)
1 1/8" x 11 7/8" TJ Rim Board	6.27
1 1/8" x 14" TJ Rim Board	0.00
1 3/4" x 11 7/8" 1.55E TimberStrand LSL	71.00
1 3/4" x 11 7/8" 2.0E Microllam LVL	6.00
1 3/4" x 11 7/8" 2.0E Microllam LVL (WSO)	32.00
1 3/4" x 14" 2.0E Microllam LVL (WSO)	4.00
1 3/4" x 16" 2.0E Microllam LVL	4.00
Total	528.20